



DrainTracker Mini Camera User Manual

Please read these instructions and do a test recording *before* you perform your first inspection in the field.

Inspect your system carefully upon receipt. Let us know right away of any damage you note.

Included with your purchase are:

- User manual
- Remote Control
- AC charging cord for recharging the onboard battery or using household current
- 32GB SD memory card for storing videos and photos to document customer jobs



SPECIAL NOTE:
Because of the unique flexibility of the DrainTracker push rod, **DO NOT** try to force it through any obstructions. Kinking the cable could result.

Control Panel

See inside for more details on operations.

TRANSMIT

Press to power on sonde and transmit 512Hz signal. Press again to stop transmitting.

SNAPSHOT

Press to take still image of what is on screen.
Not available while recording video

POWER

Press once to turn on camera.
Outer ring will glow blue while unit is on.
Press again to power off.



LED Dial

Turn clockwise to increase LED lighting level on the camera head, counterclockwise to reduce level.

RECORD

ON Button

Press once to record video.
Red LED light will flash while unit is recording video.

OFF Button

Press once to stop recording video

Infrared sensor for use with Remote

052820

Manufacturers of Quality
Sewer and Drain Cleaning
Equipment since 1957

www.MyTana.com

746 Selby Ave • St. Paul MN, 55104
fax: 651.222.1739

1.800.328.8170

Factory Direct Customer Service
M-F 7am - 5pm CST
Competent • Polite • Clear

Operating the System

Startup

Make sure the SD card is inserted in the SD port on the lower front panel before powering the unit on.

When the POWER button is pressed, the following start up screens will be shown and are part of normal camera operation:

- signal search screen
- MyTana logo screen
- welcome message, SD card initializing message, and BNC monitor input messages
- date and time stamp will display as well as current camera image

Note: clock is only available in 24 hour time format.

See instructions on back page to change the time if necessary.

Camera is now ready to use.



Deploying and stowing the camera head

The camera head is designed retract and to stow into the housing in the front lower panel on the left side.

To deploy the camera, reach into the spool opening on the side of housing and lift up slightly on camera cable to release the camera head from its detent (seat) while pulling the camera out.



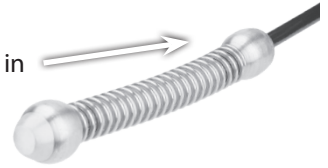
NEVER force the camera to come out of its housing.

To stow the camera head, push in all cable and camera head until it locks into place in the detent again.



Using the sonde to locate the camera's position

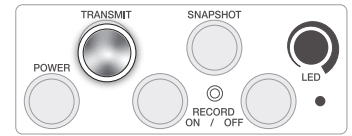
The camera's sonde coil is located in the back housing assembly and transmits 512Hz signal.



To activate the sonde, press the TRANSMIT button once to power the sonde coil.

The ring around the button will glow blue to indicate the sonde is transmitting a signal. Signal distance depends on locating environment, substrate and pipe materials, etc.

Press the TRANSMIT button again to stop transmitting 512Hz signal. Blue light will go off.



System settings

We establish default system settings we believe will work best for you. Refer to the back page for all settings, and instructions on how to change ones that are optional.

Recording video or snapshots

To document your inspection jobs, the DrainTracker lets you both record video and take single snapshots. Video and snapshots will be saved to SD card (sized 32GB or smaller).

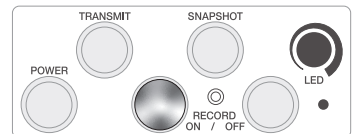
Reminder, the DrainTracker requires the SD card to be installed at all times for proper camera operation.

To record video –

Press the RECORD ON button once to start recording video.

Three indicators let you know the camera is recording video:

- the red LED light will flash while unit is recording
- a "REC" icon will flash in the lower left corner of the screen
- a recording timer will be displayed in the upper right corner of the screen.



Note: Video recording is done continuously. However, by default, video files are saved in 5 min time increments regardless of how long the recording was.

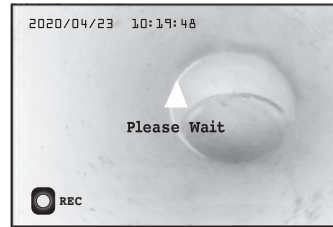
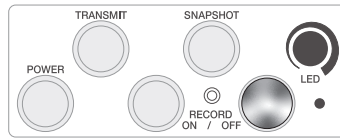
For example – a 7:25 minute video would be saved on the SD card in a 5 minute file and a 2:25 minute file. Videos shorter than 5 minutes time will be saved in one file.

Other time increments are available. See back page for instructions on how to change, Rec. Settings > Section.

To stop recording –

Press the RECORD OFF button to stop video recording.

The file(s) will then be saved onto the SD card and a “PLEASE WAIT” message will display temporarily in the center of the screen while this happens.



- **Do not power down the camera during this time or the file will not write onto the SD card.**

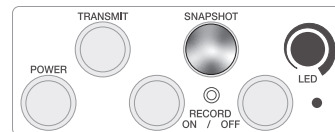
Once files have been successfully processed and saved to the SD card, additional icons appear on the screen:

- camera symbol
- approximate time remaining on SD card, and card icon



To capture a still photo (snapshot)

Press the SNAPSHOT button to record a still photo of what is on screen. Image will be automatically saved to the SD card.



You can't take snapshots at the same time you are recording video.

Viewing and Deleting Files

Video and snapshot files can be viewed or deleted two ways:

- using the remote to view/delete files on the DrainTracker's monitor (instructions follow, also refer to back page)
- transfer the files from the SD card to a computer, then view/delete them on the computer (see below)

To transfer files

Power the DrainTracker off. Remove the SD card from its slot and insert it in to your computer's SD port. Working from the computer you can then view, delete, upload or email files:

- either from the SD card
- OR transfer them to your computer's storage to ensure you have a backup and files don't get deleted
- The DrainTracker's system is set to overwrite files when the SD card is filled, and it will automatically delete 300 MB of the oldest files.

Viewing files on the monitor

Using the remote, navigate to the Playback menu, press OK.

- Select your desired video or snapshot from the list (see back page for instructions on how to select), then press OK

- **CAUTION: If you press PLAY instead of OK it will take you to the delete file yes/no screen**

FOR VIDEO PLAYBACK:

- Press PLAY to view the recording
- Press PLAY again while video is playing to pause
- Press left or right arrows while video is playing to rewind or fast forward at 1X or 2X or 4X speed
- Press STOP while video is playing to stop video playback

WHEN FINISHED VIEWING BOTH VIDEO AND SNAPSHOTS:

- ESC key takes you back to the list of files screen
- Press ESC again to return to main menu

Deleting files using the remote

Using the remote, navigate to the Playback menu, press OK.

- select the video or snapshot you want to delete (see back page for instructions on how to select) then press DEL
- the Delete screen will appear, select Yes to confirm your choice to delete the file
- the list of files screen will return – if there are no files on the SD card, a “No File” message will show

Charging the DrainTracker

The camera can be powered by either being plugged into a wall outlet or using the internal 12 VDC battery. The battery can operate up to 6-7 hours with continuous use. Actual time will vary depending on age of battery, use of sonde, recording functions, LED brightness and ambient temperature.



Power cord port on back side of camera.

We recommend recharging the battery after use, or periods of non-use storage. To recharge, plug the power cord in to a standard wall outlet. A full recharge takes only a few hours. Overnight charging is ok, but not needed. Prolonged charging can reduce the battery life.

Maintenance and Care tips

- Don't use a camera to clear blockages. This can result in a buckled, kinked or broken push rod, or damaged camera head.
- Inspection systems' control panels are water resistant, but not waterproof, be sure to keep it away from spray and avoid using controls with wet/dirty gloves.
- When pulling the camera out of the line, wipe the push rod down with a cleaning solution on a rag.

See other tips on our website at blog.mytana.com

Using the Remote



Navigate menus
by pressing arrows

Select menu items
by pressing OK

Return to
previous menus
by pressing ESC

Press MENU to access
main menu:

Set Up

Exit Menu screens by
selecting Exit

MENU NAME	OPTIONS	FURTHER OPTIONS	COMMENTS
Image Setting	Quality	<div>H (High)</div> <div>M (Med)</div> <div>L (Low)</div>	Default setting on High – gives best image resolution.
	Frame Rate	<div>30 fps</div> <div>15 fps</div> <div>5 fps</div>	Default set at 30 fps – gives best resolution.
	Resolution	<div>D1</div> <div>VGA</div> <div>QVGA</div>	Default set at D1 – gives best resolution.
Rec. Setting	Scheduled Time		N/A Options are non-functioning.
	Overwrite	<div>Yes</div> <div>No</div>	Factory set to Yes – this means when the SD card gets filled the system will delete 300MB of the oldest files in order to make room for new recordings.
	Section	<div>1 min</div> <div>5 min</div> <div>15 min</div> <div>30 min</div> <div>1 hr</div>	Length of recording units, see page 2. Factory set to 5 min.
	Motion Detection		N/A Options are non-functioning
Rec. Mode	Manual		N/A – keep at Manual. Other options are non-functioning.
Play Back	<div><div>File Name</div><div>Date</div><div>Start Time</div><div><div></div>00000012020/04/1213:41:36</div><div><div></div>00000022020/04/3008:32:14</div><div><div></div>00000032020/05/0916:15:07</div><div><div></div>00000042020/05/1511:06:51</div></div>		Used to view or delete files. Keep notes of time you do recordings, that is how you will ID files. Use arrow buttons to select files (indicated by lines) to view or delete. See page 3 for more instructions.
System Setting	Language	English	Set for English
	Time	<div><div>Date Time</div>2020/05/0708:48</div>	Used for time stamp on recordings. Use remote ◀▶ arrows to move onscreen arrows side to side. Use ▼▲ arrows to change numbers. Will need to reset time for Daylight Savings Time changes.
	Format	<div>Yes</div> <div>No</div>	Default set to NO – formatting card will erase all data.
	Card Info	<div>Total Size : 30420MB</div> <div>Usage Size : 0.1%</div> <div>Remain Size: 99.9%</div>	Shows amount of storage remaining on SD card.
	Alarm Period		N/A
	Time Stamp	<div>Yes</div> <div>No</div>	Default set to Yes – displays time on recordings.
Exit			Press to exit all menus



Manufacturers of
Quality Sewer & Drain
Cleaning Equipment
since 1957

www.MyTana.com
746 Selby Ave
St. Paul MN, 55104
fax: 651.222.1739

1.800.328.8170
Factory Direct Customer Service
Mon – Fri 7am – 5pm CST
Competent • Polite • Clear